

SOFTWARE UPDATE PROCEDURE TZT9F/TZT12F/TZT16F/TZT19F/ TZT2BB/TZT10X/TZT13X/TZT16X/ TZT22X/TZT24X/TZTBXX

This document provides the procedures for updating the software for the TZT9F/TZT12F/TZT16F/TZT19F/TZT2BB/TZT10X/TZT13X/TZT16X/TZT22X/TZT24X/TZTBXX.

Note 1: Save all important user data such as points, routes, and settings in advance.

Note 2: Refer to the operator's manual (OME-45120-*/OME-44870-*/OME-45240-*) or the eGuide for how to save user data.

Note 3: Software updates must be done during anchoring.

Summary

Software updates can be done by the following two procedures.

- Download the software to a USB flash memory (see “1. How to update the software by downloading to a USB flash memory”).
- Update the software via wireless LAN (see “2. How to update the software by connecting to a wireless LAN. ”),

1. How to update the software by downloading it to a USB flash memory

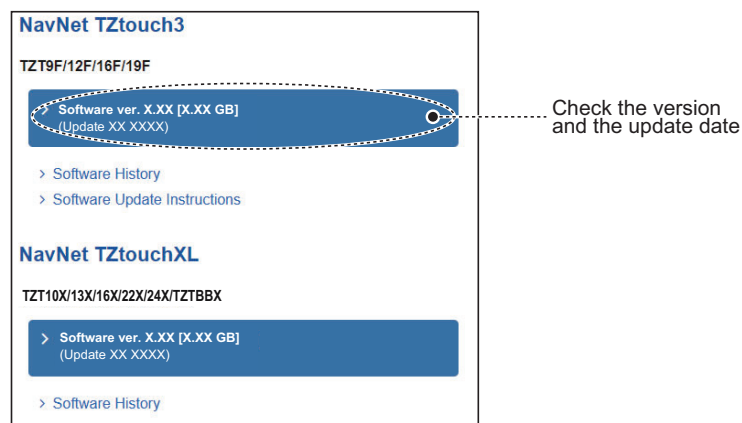
The update takes about 20 minutes.

Notice

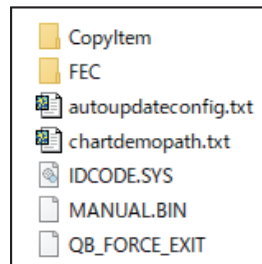
- A USB flash memory with a capacity of 32 GB or less is required for software updates. Format the memory in FAT32 format in advance.
- Disconnect all USB devices from the device before updating the software.
- Do not remove the USB flash memory while updating the software. Data may be corrupted.
- When multiple MFDs are connected to the same network, turn off the other MFDs and update them one by one.

1. Go to the website (<https://v1.furunosoftware.com>) and check the version and the update date to make sure you have the latest software (see the figure below).

Note: The version no. display for the TZT2BB is similar.

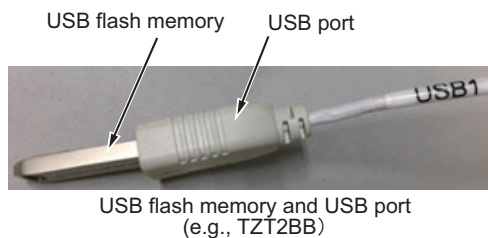


2. Download and unzip the software to your PC.
3. Connect the USB flash memory to the PC.
4. Copy the extracted software directly to the USB flash memory (see the figure below).



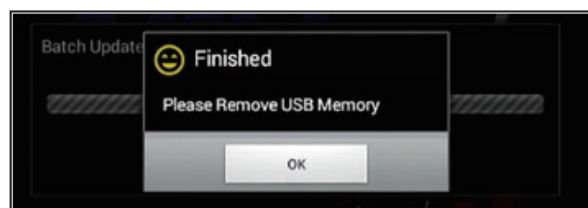
Note: Copy only the software to the USB flash memory and do not store any other files.

5. Disconnect the USB flash memory from the PC.
6. Turn off the power to the unit and insert the USB flash memory (removed in step 5) into the USB port specified in the table below. The figure below shows a USB flash memory connected to the composite signal cable.



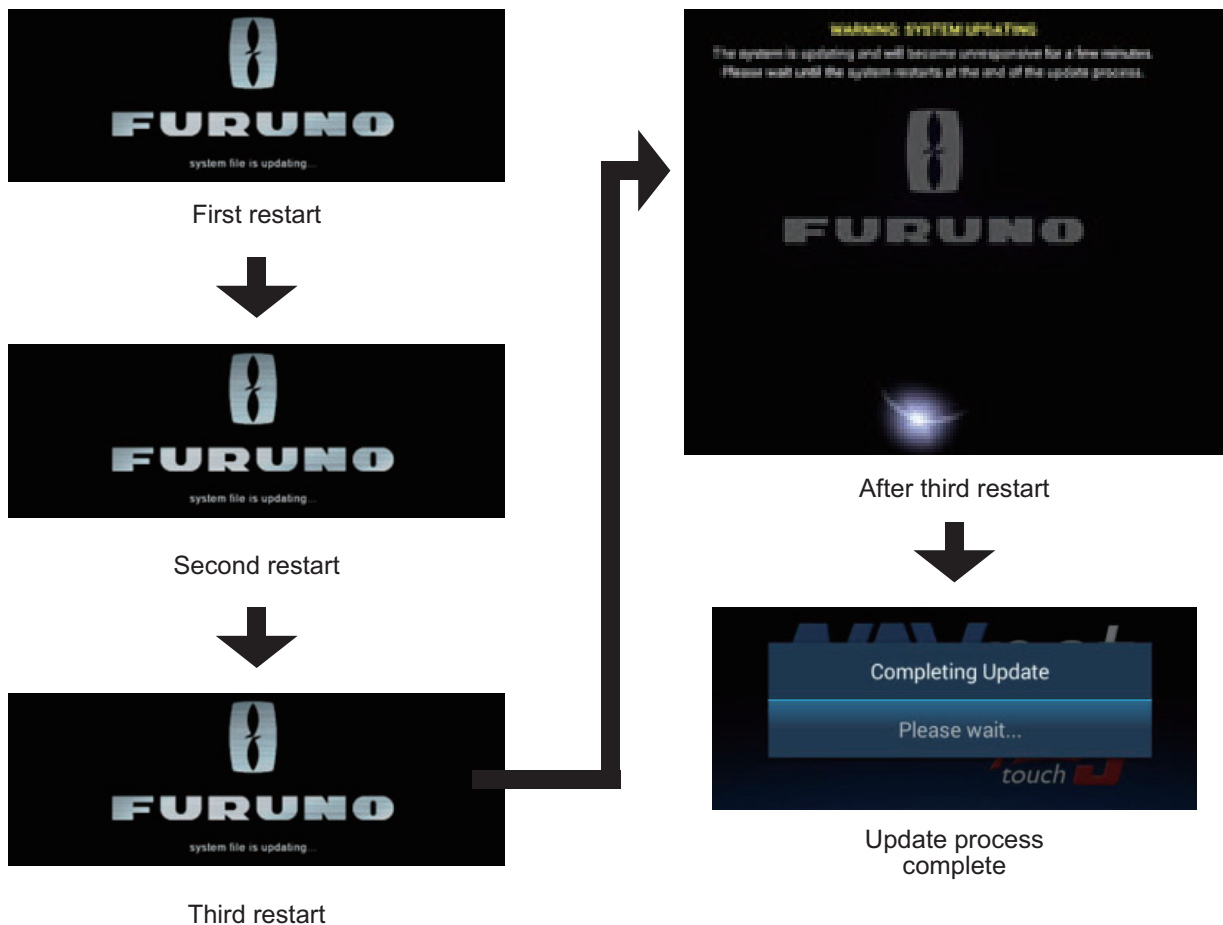
Model	Connector Location	Port
TZT2BB	Composite connector	USB1
TZT9F/12F		USB
TZT16F/19F		USB1
TZT10X/13X/16X/22X/24X/BBX	Back of the unit	USB

7. Turn on the unit to start the update process. Messages and an update screen are shown during the update, but no operation is required as the transition is automatic.
8. The message shown in the figure below appears on the screen. Remove the USB flash memory.



9. After removing the USB flash memory, the unit automatically restarts three times (see the figure below).

Note: Do not turn off the power until the update is completed.

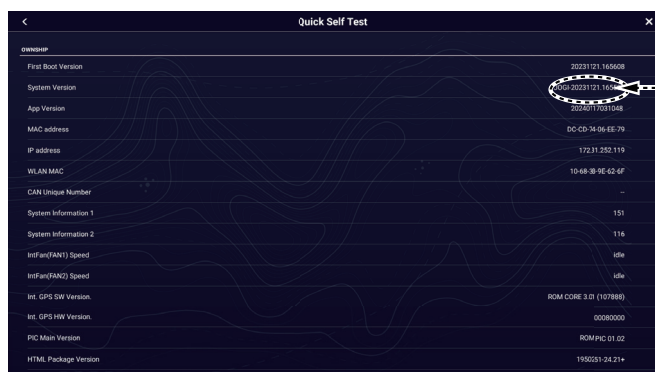


After the update is completed, restart the power as follows:

- TZT9F/TZT12F/TZT16F/TZT19F: The unit will restart automatically.
- TZT10X/TZT13X/TZT16X/TZT22X/TZT24X/TZTBX: The unit will restart automatically.
- TZT2BB: The unit will be powered off, so please turn it on again manually.

10. Confirm the software version is as shown below, then turn off the power.

- TZT10X/13X/16X/22X/24X/TZTBX: [Settings]-[Initial Settings]-[Service/Self Test/Log]-[Quick Self Test]
- Other units: [Settings]-[Initial Settings]-[Quick Self Test]



Check that the software version is the latest.

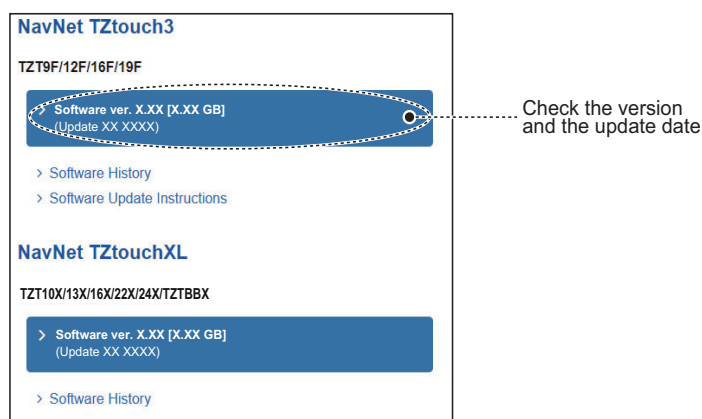
If multiple units are connected to the same network, repeat steps 6 through 9 to update the next unit.

2. How to update the software by connecting to a wireless LAN

The update takes approximately 15 minutes (depending on the network environment).

Notice

- Make sure that the versions of the software are as follows:
Software updates via wireless LAN are not available for units with earlier versions.
TZX9F/12F/16F/19F: Version 3.01 or later.
TZX2BB: Version 9.01 or later.
- Do not turn off the power while updating the software.
- If multiple MFDs are connected to the same network, they will also be updated simultaneously.
Do not turn off other MFDs.
- To reduce the size of the software update file, only the OS, application, built-in fish finder, FPGA, and e-Guide are updated. If you need to update the tidal database, HTML access file, etc., do the update according to "1. How to update the software by downloading to a USB flash memory".
- Go to the website (<https://v1.furunosoftware.com>) and check the version and update date to make sure you have the latest software (see the figure below).
Note: The version no. display for the TZX2BB is similar.

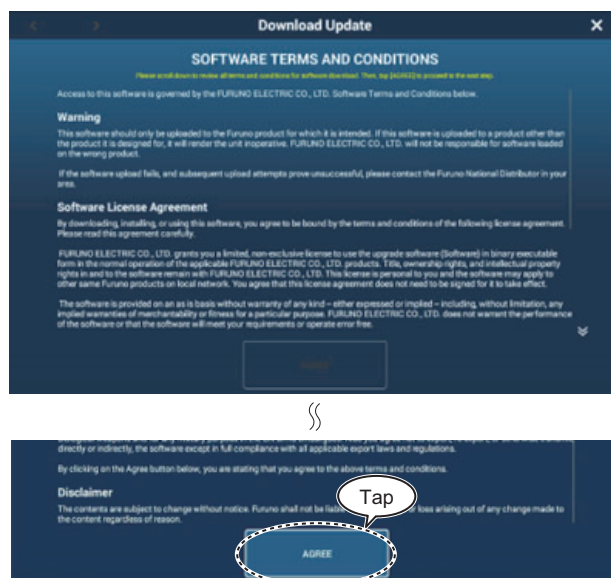


1. Connect the device to the wireless LAN by referring to the subsection 1.20.1 Connecting to an existing wireless LAN, in the operator's manual.
 - TZX9F/TZX12F/TZX16F/TZX19F: OME-45120
 - TZX10X/TZX13X/TZX16X/TZX22X/TZX24X/TZTBXX: OME-45240
 - TZX2BB: OME-44980
2. After connecting to the wireless LAN, tap [UPGRADE NOW] when the following window appears.
If you need to abort the update at this time, tap [REMIND ME LATER] or [SKIP THIS VERSION]. You can re-display the window from [Home]-[Settings]-[General]-[Check for Software

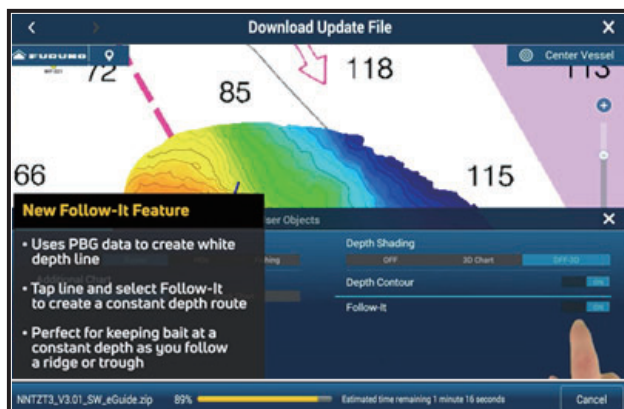
Update] and update the software.



3. Read the software terms and conditions, scroll to the end, then tap [AGREE].



4. The download page appears and downloading is performed automatically. During the downloading, the progress is displayed at the bottom of the page and a tutorial movie of the updated software is played.

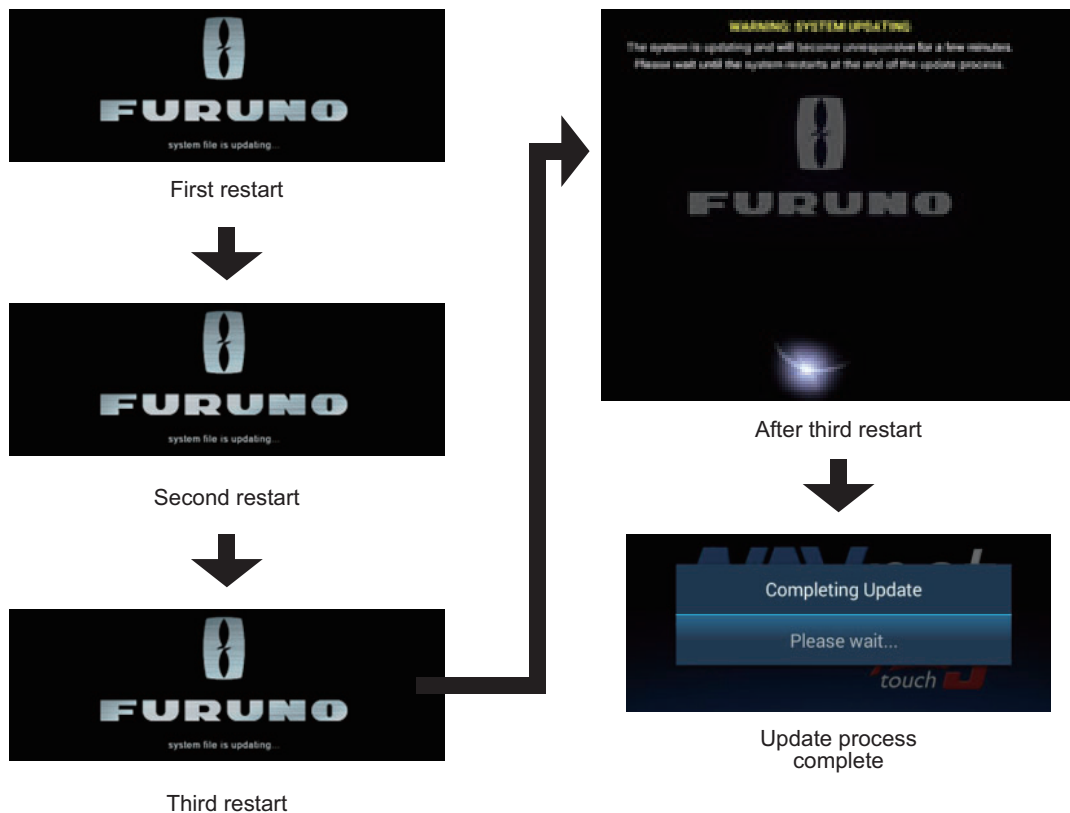


5. After downloading, the update begins. During the update, messages and update screens appear, but no operation is required as the process is automatic.

6. When the update is completed, the unit automatically restarts three times (see the figure on the next page).

Note: Do not turn off the power until the update is completed.

7. During the system update, the screen automatically transitions as shown below.



After the update is complete, restart the power as follows:

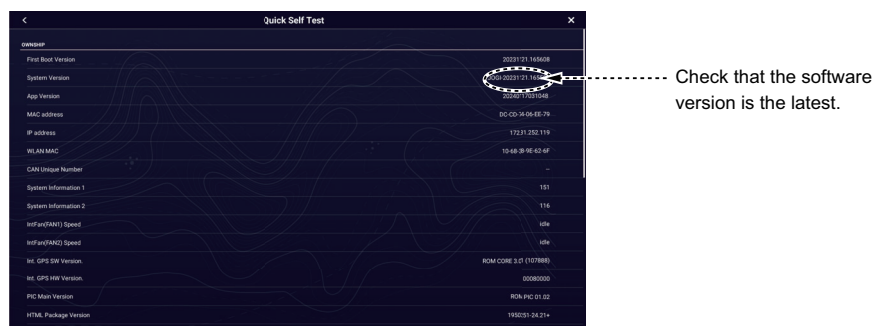
TZT9F/TZT12F/TZT16F/TZT19F: The unit restarts automatically.

TZT10X/TZT13X/TZT16X/TZT22X/TZT24X/TZTBX: The unit restarts automatically.

TZT2BB: The unit will turn off and must be manually turned on again.

8. Confirm the software version as shown below, then turn off the power.

- TZT10X/13X/16X/22X/24X: [Settings]-[Initial Settings]-[Service/Self Test/Log]-[Quick Self Test].
- Other units: [Settings]-[Initial Settings]-[Quick Self Test].



If multiple units are connected in the same network, all are updated at the same time, so check them in the same way.